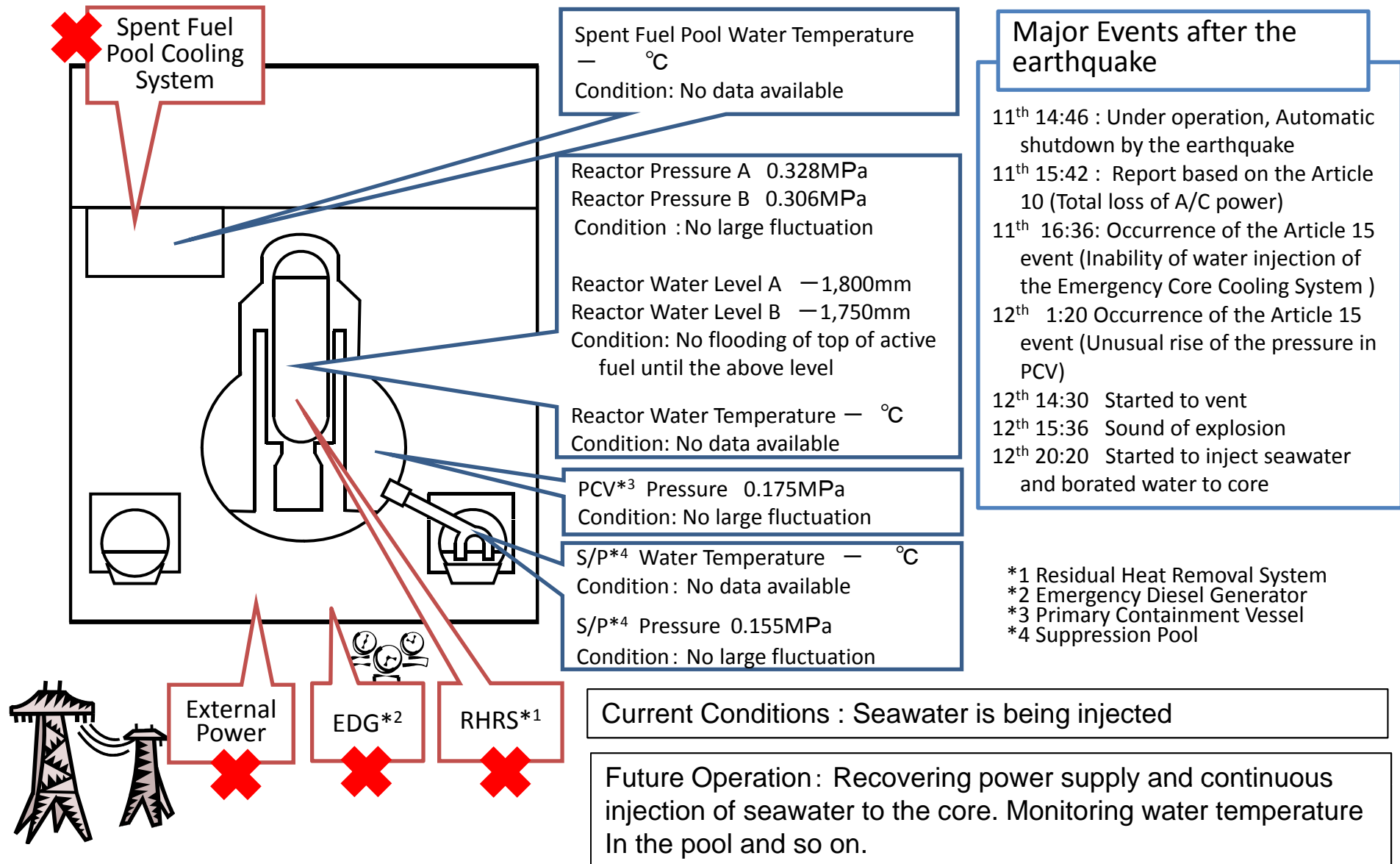


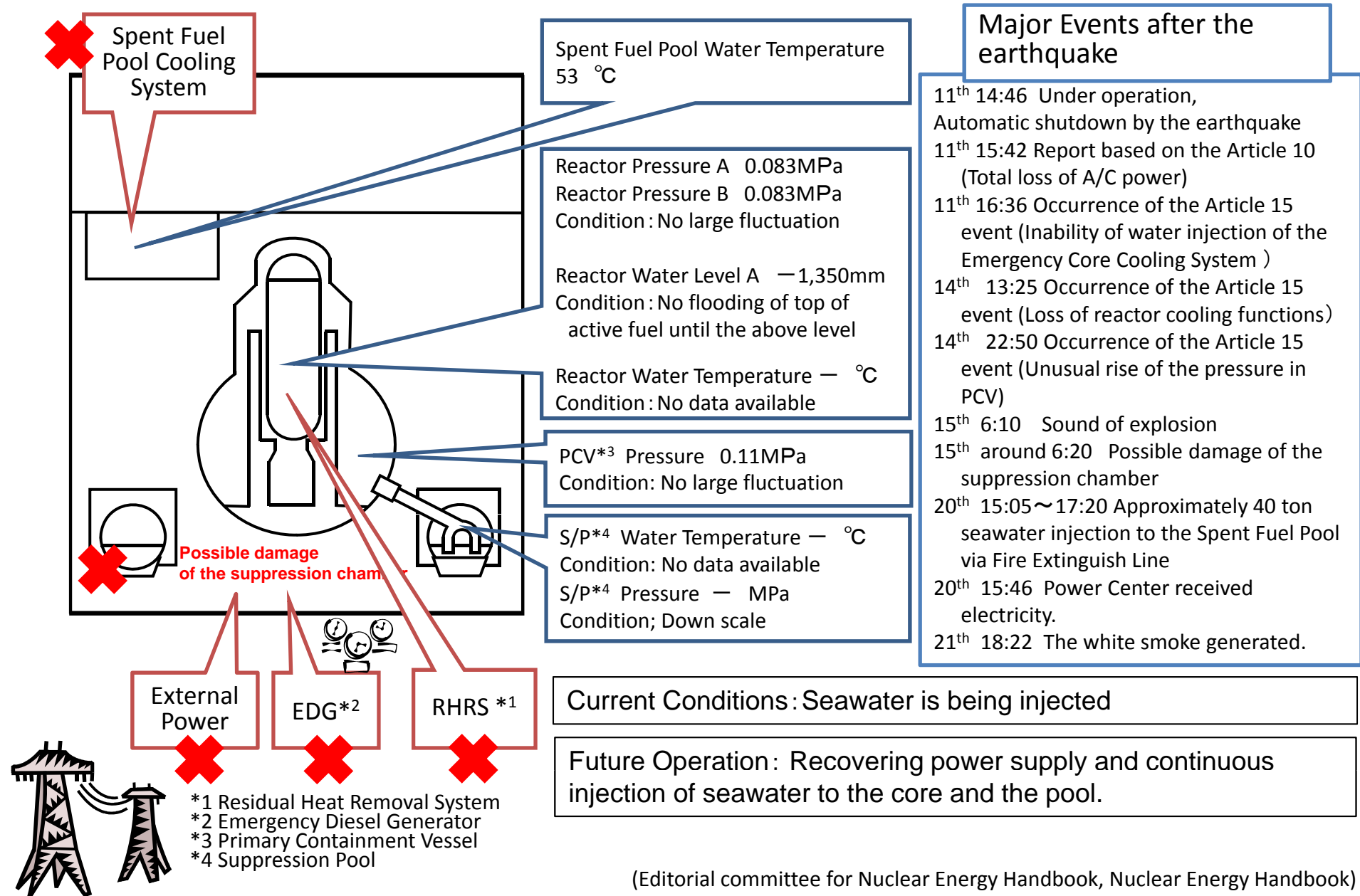
Conditions of Fukushima Dai-ichi Nuclear Power Station **Unit 1**

(As of 11:00 March 22nd, 2011)



Conditions of Fukushima Dai-ichi Nuclear Power Station **Unit 2**

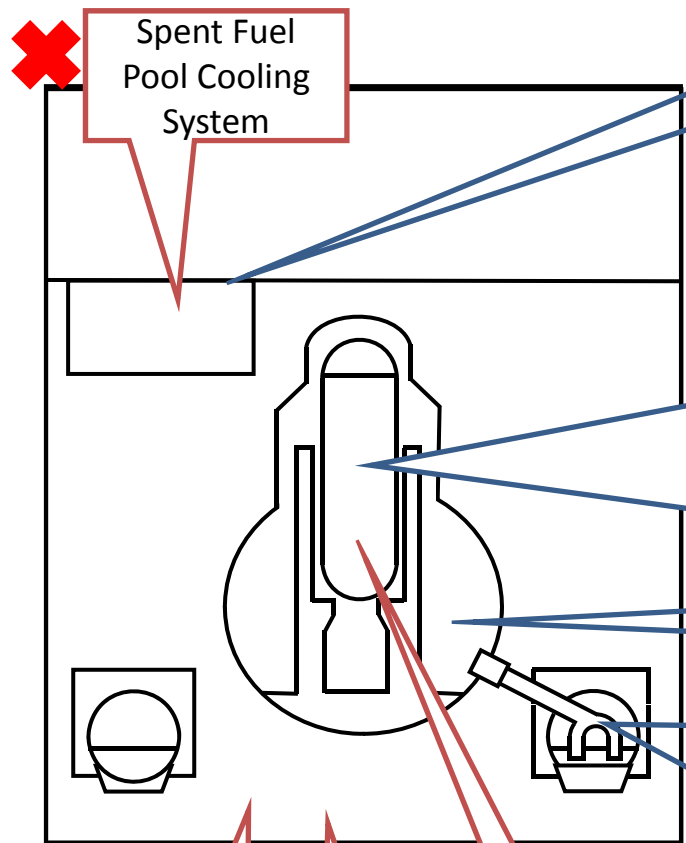
(As of 11:00 March 22nd, 2011)



Conditions of Fukushima Dai-ichi Nuclear Power Station **Unit 3**

(As of 11:00 March 22nd, 2011)

Major Events after the earthquake



Spent Fuel Pool Water Temperature — °C
Condition: No data available

Reactor Pressure C 0.000MPa
Reactor Pressure B 0.137MPa
Condition: Tend to decrease

Reactor Water Level A —1,575mm
Reactor Water Level B —2,350mm
Condition: No flooding of top of active fuel until the above level

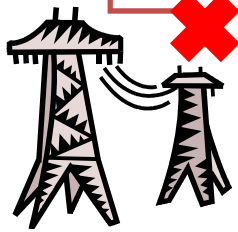
Reactor Water Temperature — °C
Condition: No data available

PCV*³ Pressure 0.100MPa
Condition: Monitoring

S/P*⁴ Water Temperature — °C
Condition: No data available
S/P*⁴ Pressure — MPa
Condition; Down scale

- 11th 14:46 Under operation, Automatic shutdown by the earthquake
- 11th 5:42 Report based on the Article 10 (Total loss of A/C power)
- 13th 5:10 Occurrence of the Article 15 event (Inability of water injection of the Emergency Core Cooling System)
- 13th 9:20 Started to vent
- 14th 7:44 Occurrence of the Article 15 event (Unusual rise of the pressure in PCV)
- 14th 11:01 Sound of explosion
- 16th around 8:30 White smoke generated.
- 17th 9:48~10:01 Water discharge by the helicopters of Self-Defense Force (4 times)
19:05~20:07 Water spray from the ground by High pressure water-cannon trucks (Police: once, Self-Defense Force: 5 times)
- 18th before 14:00~14:38 Water spray from the ground by 6 fire engines of Self-Defense Force
~14:45 Water spray from the ground by a fire engine of the US Military
- 19th 0:00 ~01:00 Water spray by Tokyo Fire Department
- 19th 14:10 ~ 20th 3:40 Water spray by Tokyo Fire Department
- 20th 11:00 Pressure of PCV rose(320kPa).Afterward fell.
- 20th 20:39 ~ 21st 3:58 Water spray by Tokyo Fire Department
- 21th about 15:55 Grayish smoke generated and was confirmed to be died down at 17:55.

- External Power
- EDG *2
- RHRS*1



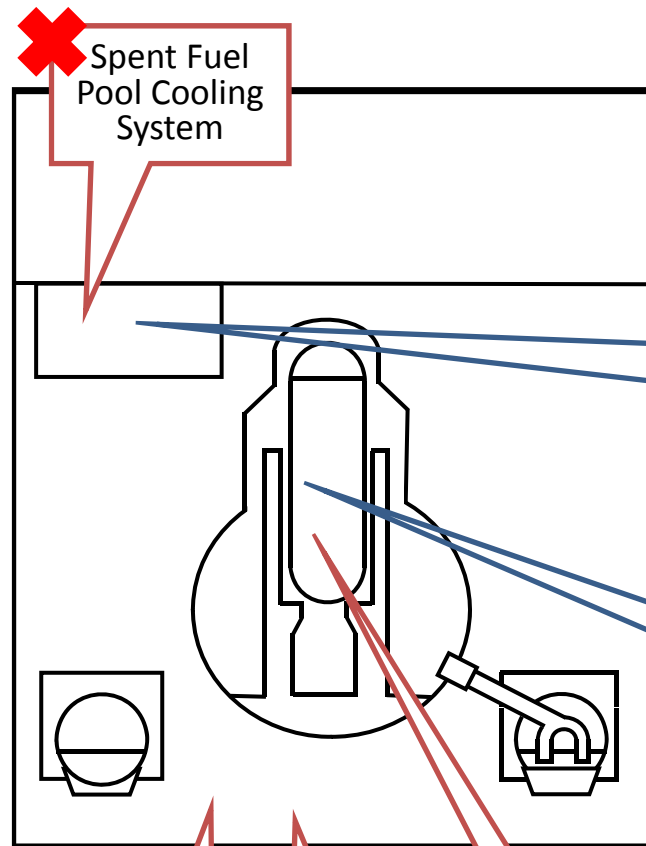
*1 Residual Heat Removal System
*2 Emergency Diesel Generator
*3 Primary Containment Vessel
*4 Suppression Pool

Current Conditions: Continuous operations for water spray over the pool and seawater injection to the core, and continuous works for recovering external power supply

Future Operation: Recovering power supply and continuous injection of seawater to the core.

Conditions of Fukushima Dai-ichi Nuclear Power Station **Unit 4**

(As of 11:00 March 22nd, 2011)



In periodic inspection outage

Water temperature in the pools is not available

No fuel is inside the reactor core

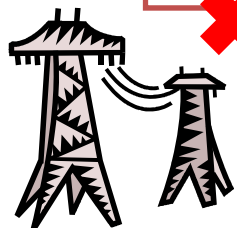
Major events after the earthquake

- In periodic inspection outage when the earthquake occurred.
- 11th 15:42 Report based on the Article 10 (Total loss of A/C power)
- 14th 4:08 Water temperature in the Spent Fuel Pool, 84°C
- 15th 6:14 Damage of wall in the 4th floor confirmed
- 15th 9:38 Fire occurred in the 3rd floor. (12:25 extinguished)
- 16th 5:45 Fire occurred. TEPCO couldn't confirm any fire on the ground. (6:15)
- 20th 9:43 Water spray over the Spent Fuel Pool by Self-Defense Force
- 20th around 18:30~19:46 Water spray over the Spent Fuel Pool by Self-Defense Force
- 21th 6:37~8:41 Water spray over the Spent Fuel Pool by Self-Defense Force
- 21th about 15:00 Work for laying cable to Power Center was completed.
- 22nd 10:35 Power Center received electricity

External Power
EDG*2
RHRS*1

Current Conditions: No fuel is in RPV*3. Water was evaluated to remain in the Pool (by TEPCO)

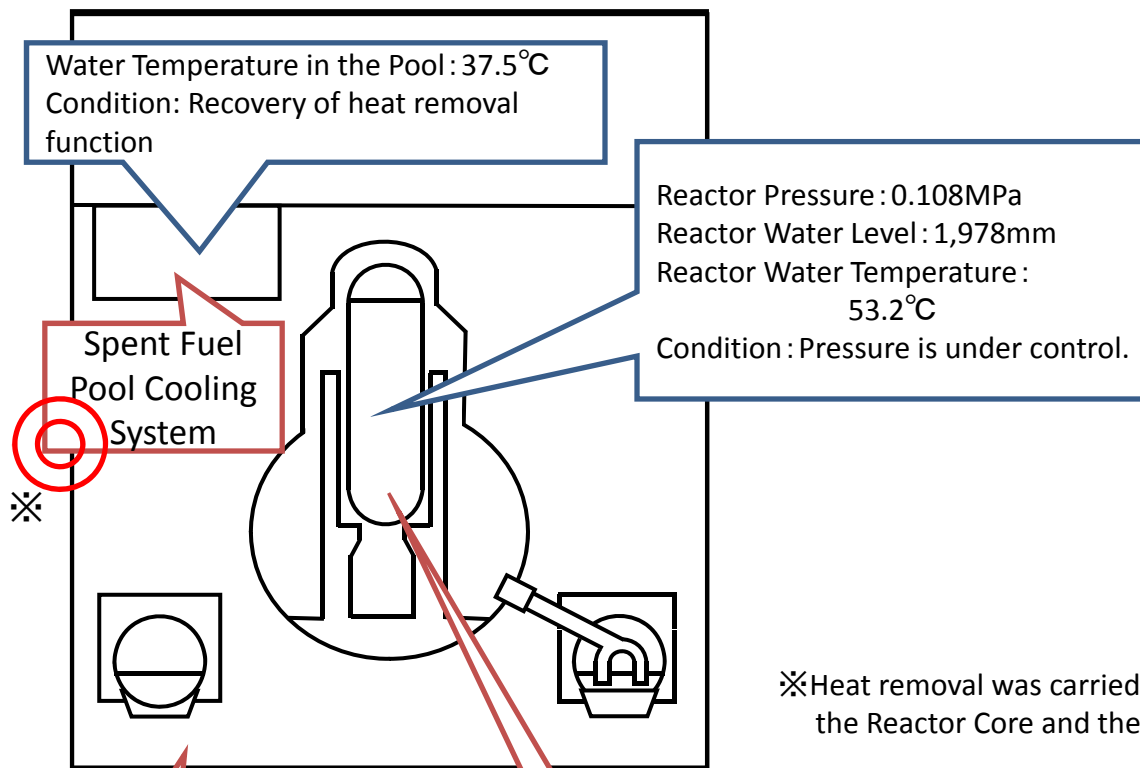
Future Operation: Recovering power supply and continuous operations for water spray over the pool



*1 Residual Heat Removal System
*2 Emergency Diesel Generator
*3 Reactor Pressure Vessel

Conditions of Fukushima Dai-ichi Nuclear Power Station **Unit 5** (As of 11:00 March 22nd, 2011)

In periodic inspection outage



Current Conditions:
Cold shutdown at 14:30 March 20th.
Receiving electricity from external power supply from 11:36 March 21th.

※

※Heat removal was carried out alternately for the water in the Reactor Core and the Spent Fuel Pool.

External Power (circled in red)



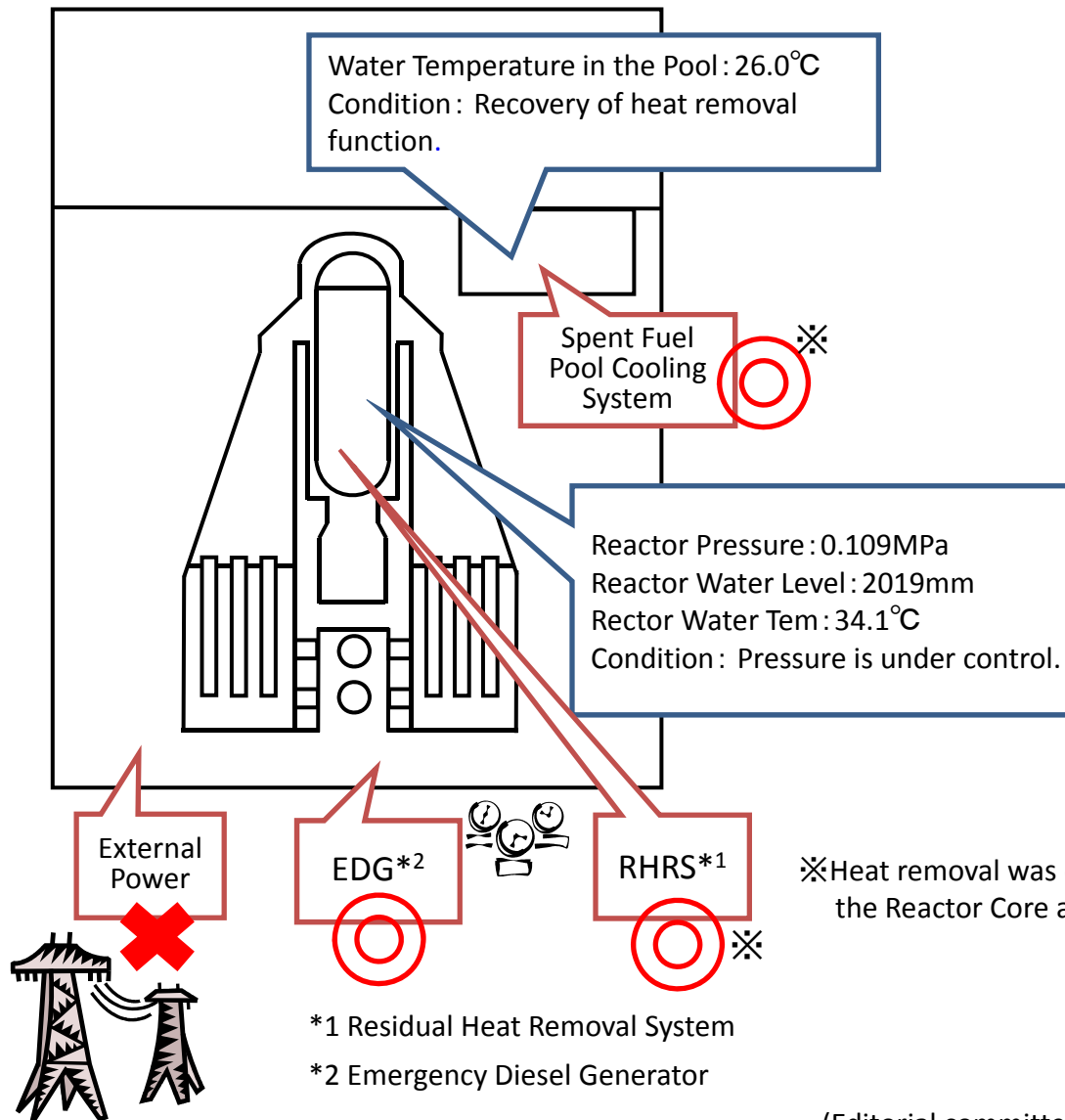
RHRS *1 (circled in red)

*1 Residual Heat Removal System

Conditions of Fukushima Dai-ichi Nuclear Power Station **Unit 6**

(As of 11:00 March 22nd, 2011)

In periodic inspection outage



Current Conditions:
Emergency Diesel Generator for Unit 6 is being operated.
Pump for RHR (B) for Unit 6 started up (22:14 March 19th) and carried out heat removal for the Spent Fuel Pool.
At 18:48 March 20th Changed the objective for heat removal from the Spent Fuel Pool to the Reactor Core
Cold shutdown at 19:27 March 20th
Receiving electricity reached to the transformer of starter at 19:52 March 20th.

Future Operation: Works for recovering external power supply.

❌ Heat removal was carried out alternately for the water in the Reactor Core and the Spent Fuel Pool.