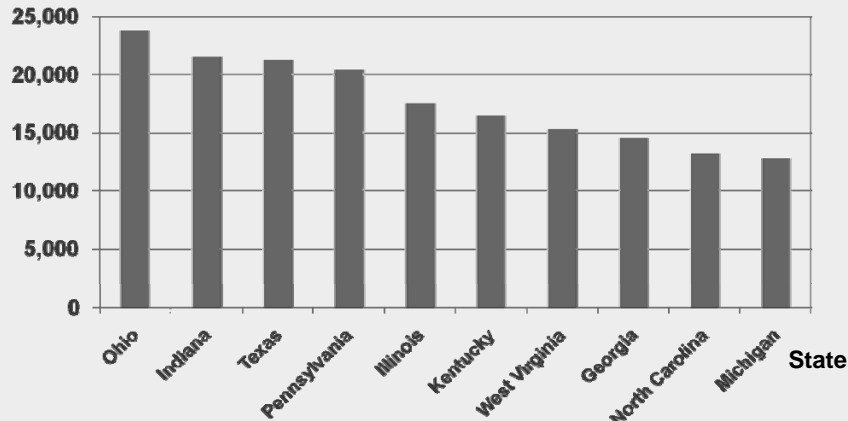


## Existing U.S. Coal-Fired Power Plants by Top Capacity States

Top 5 states account for 33% of total U.S. coal capacity

Total Capacity (MW) Top 10 states account for 50% of total U.S. coal capacity

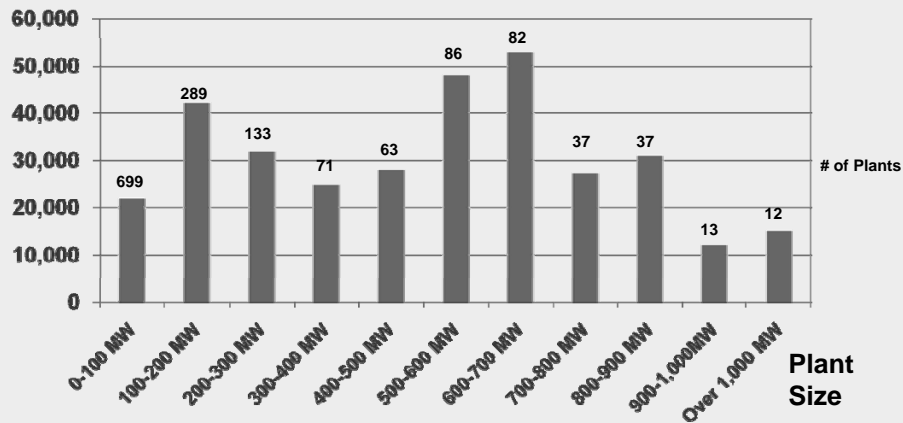


Source: SFA Pacific Inc. generated graphics from U.S. EIA data

SFA Pacific, Inc.

## Existing U.S. Coal-Fired Power Plant Unit Sizes

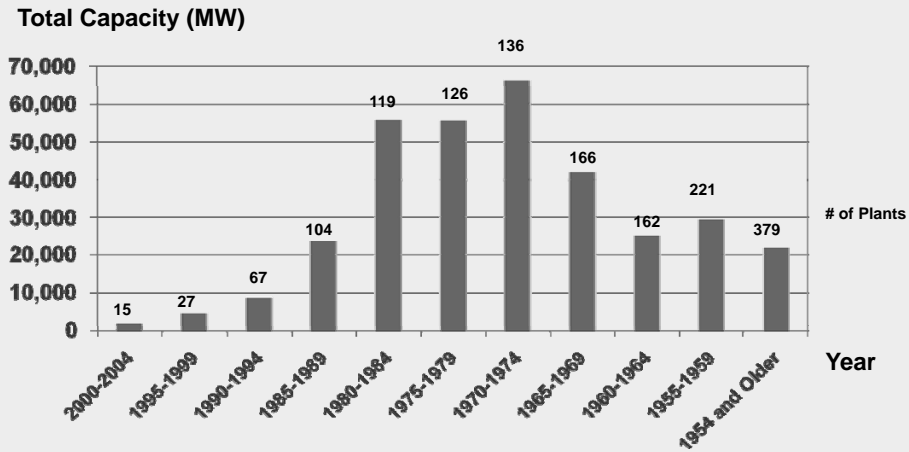
Total Capacity (MW)



Source: SFA Pacific Inc. generated graphics from U.S. EIA data

SFA Pacific, Inc.

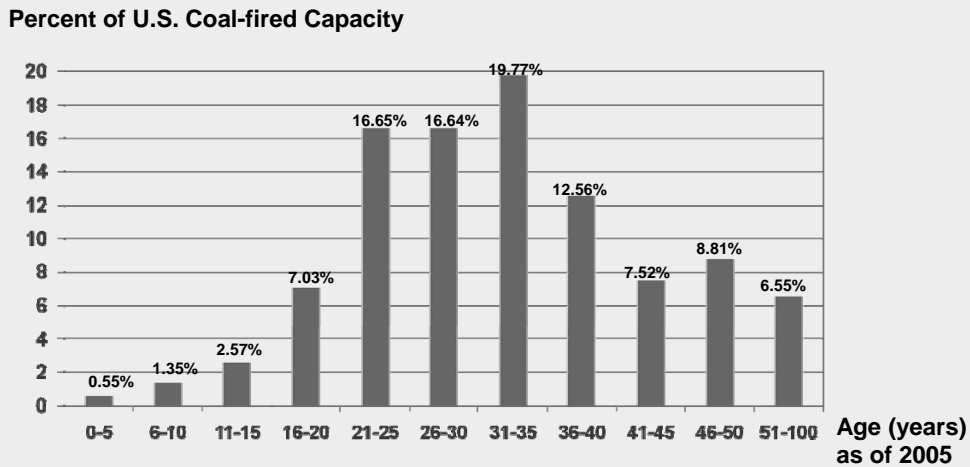
## Existing U.S. Coal-Fired Power Plants Capacity by Year of Start-up



Source: SFA Pacific Inc. generated graphics from U.S. EIA data

SFA Pacific, Inc.

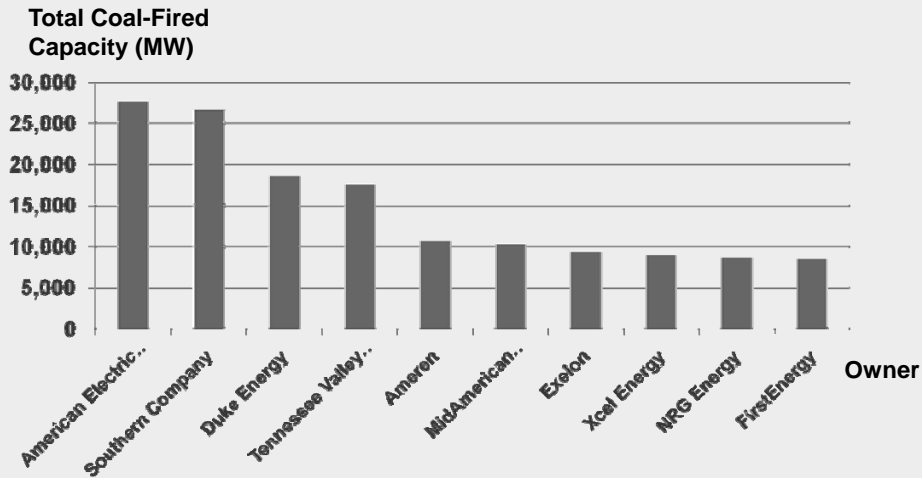
## Existing U.S. Coal-Fired Capacity Percentage by Age



Source: SFA Pacific Inc. generated graphics from U.S. EIA data

SFA Pacific, Inc.

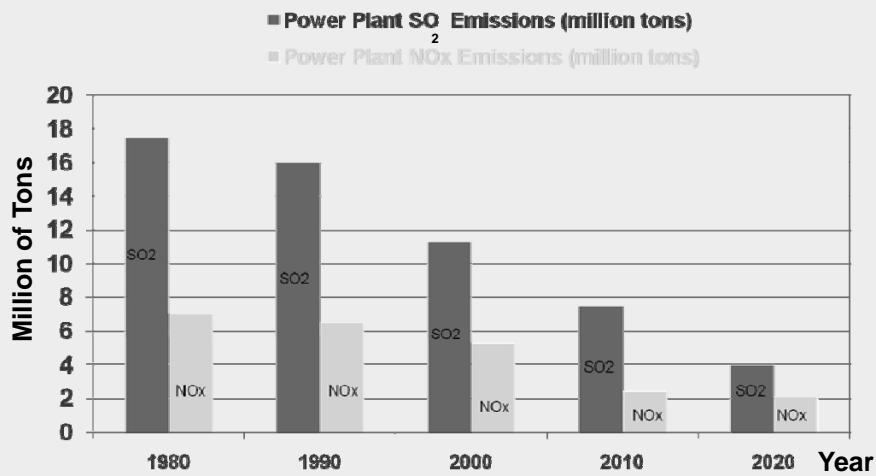
## Top Owners of Coal-Fired Power in the U.S.



Source: SFA Pacific Inc. generated graphics from U.S. EIA data

SFA Pacific, Inc.

## Coal Power Plant Environmental Improvements vs Time

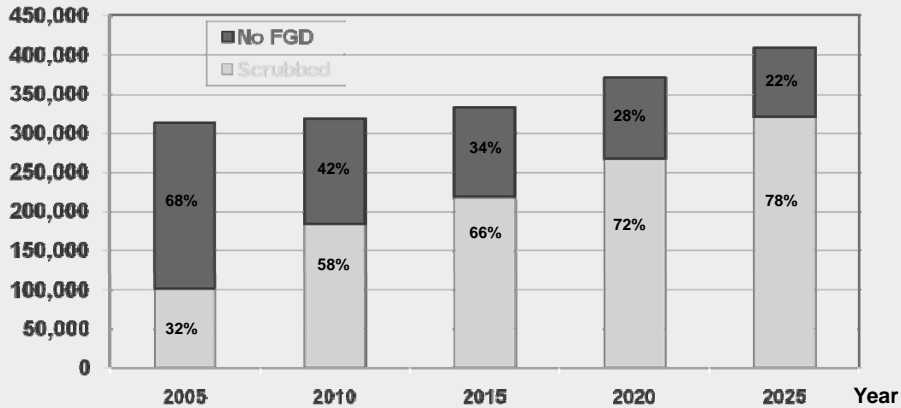


Source: SFA Pacific Inc. generated graphics from U.S. EPA data

SFA Pacific, Inc.

## FGD Systems at Coal-Fired Power Plants vs Time

Total Coal-Fired Capacity (MW)

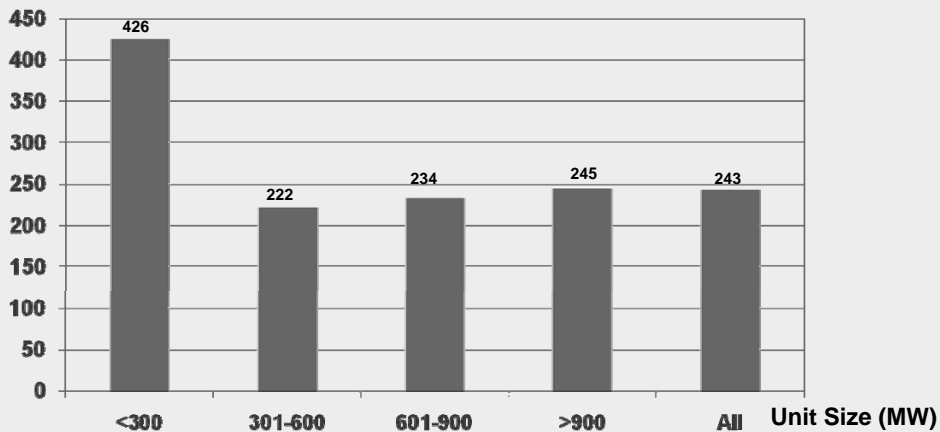


Source: SFA Pacific Inc. generated graphics from U.S. EPA data

SFA Pacific, Inc.

## FGD Systems Costs by Unit Size Suggests No Economy-of-Scale Above 600 MW Size Units

Cost (\$/kW)



Source: The Electric Utility Cost Group (EUCG) of the U.S. Fossil Productivity Committee

SFA Pacific, Inc.